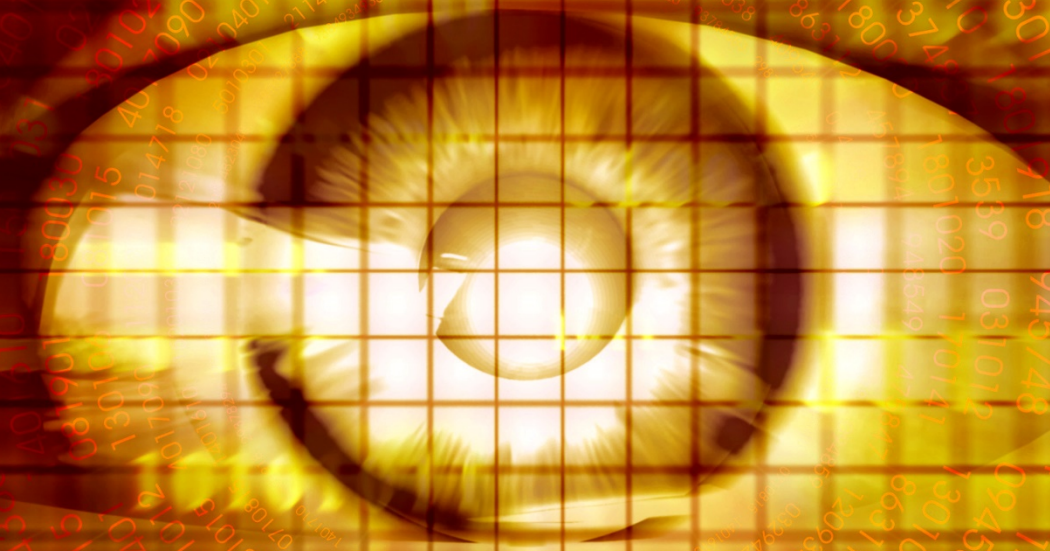
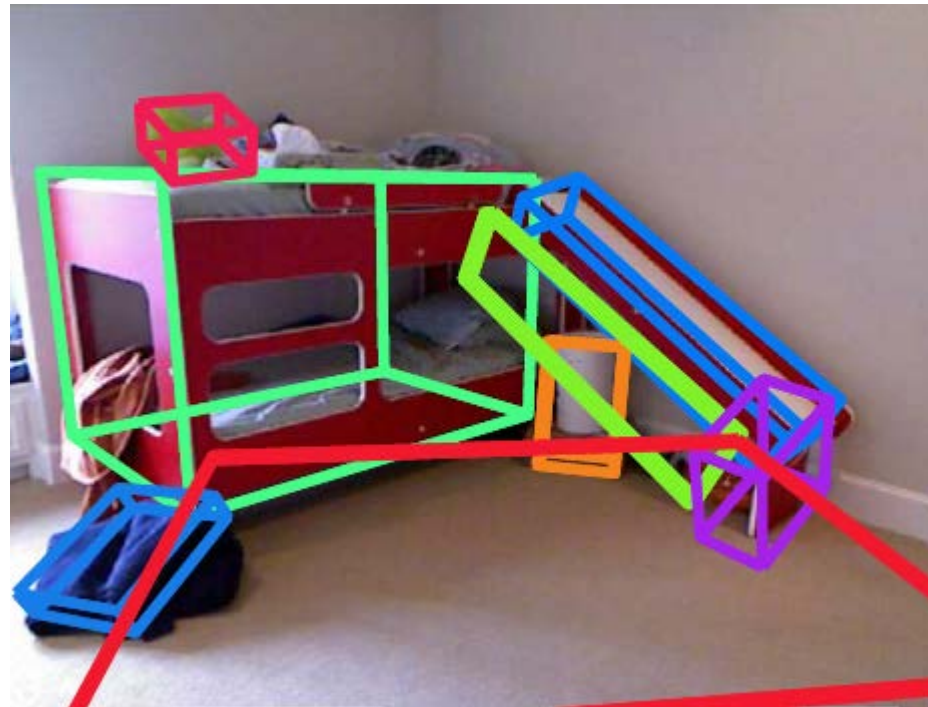


Computer Vision



What is Computer Vision?

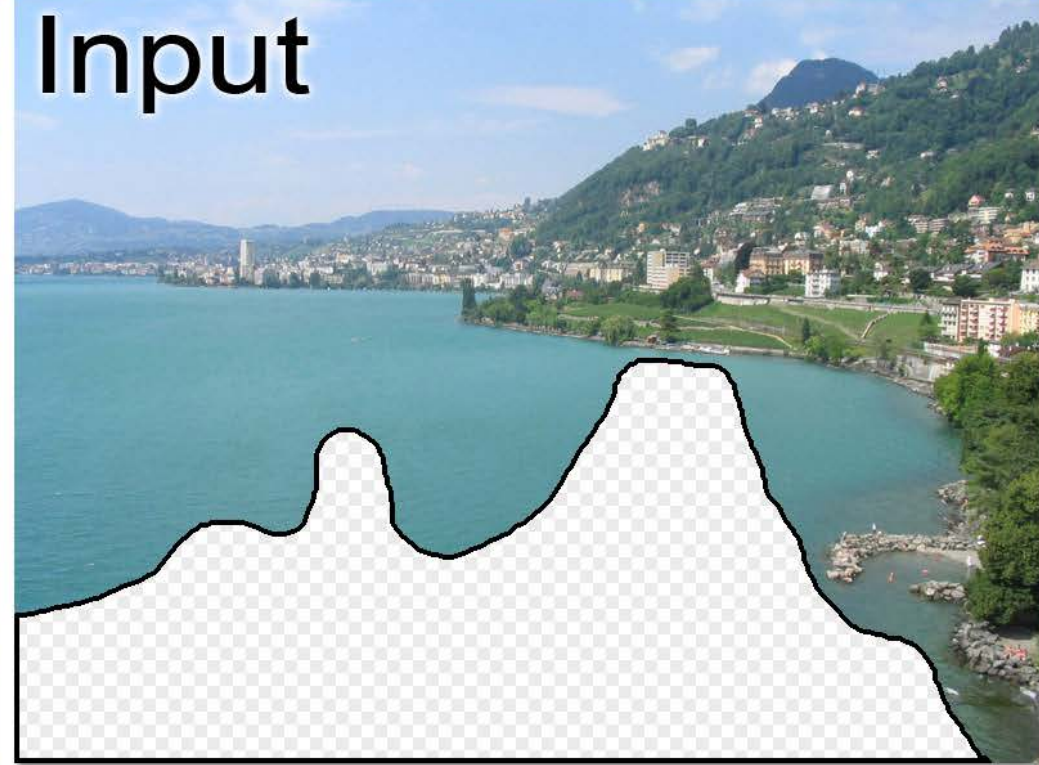
- Recognize objects and people in images
- Construct 3D models of scenes



Original



Input

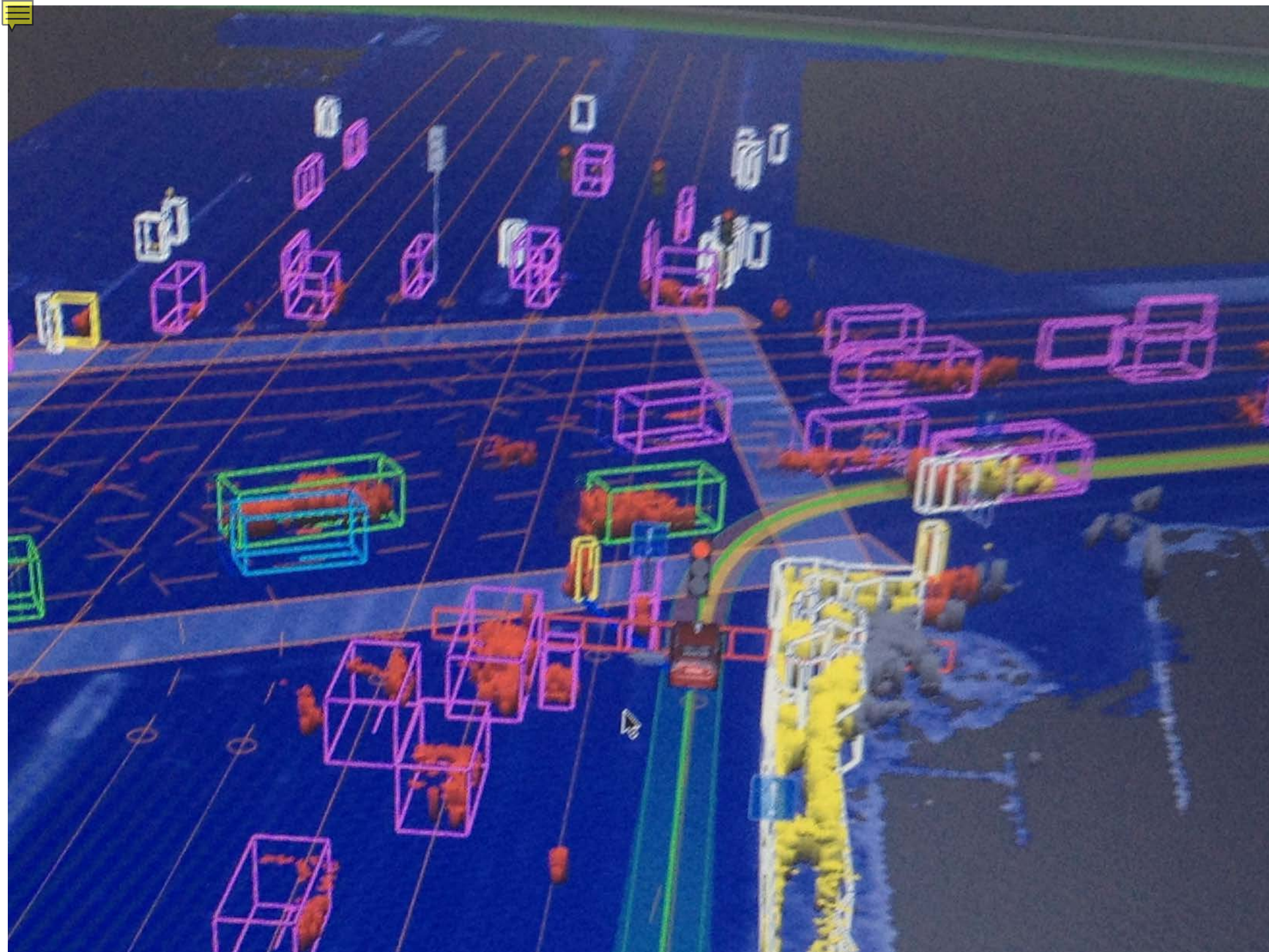


Scene Matches



Output

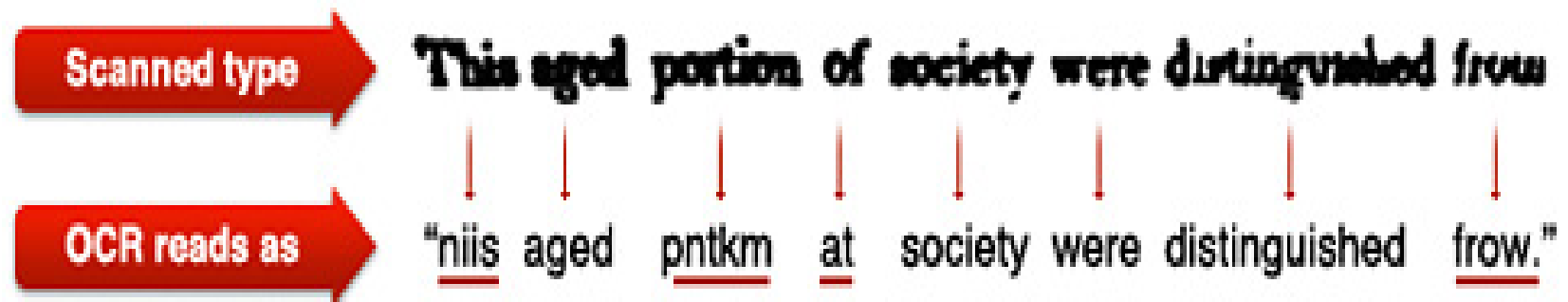






Difficulties

- Humans are good at “hard” things, but computers are good at “easy” things.
- Human vision relies a lot on context





Edge Detection

- Start at the bottom; pick out edges in an image.



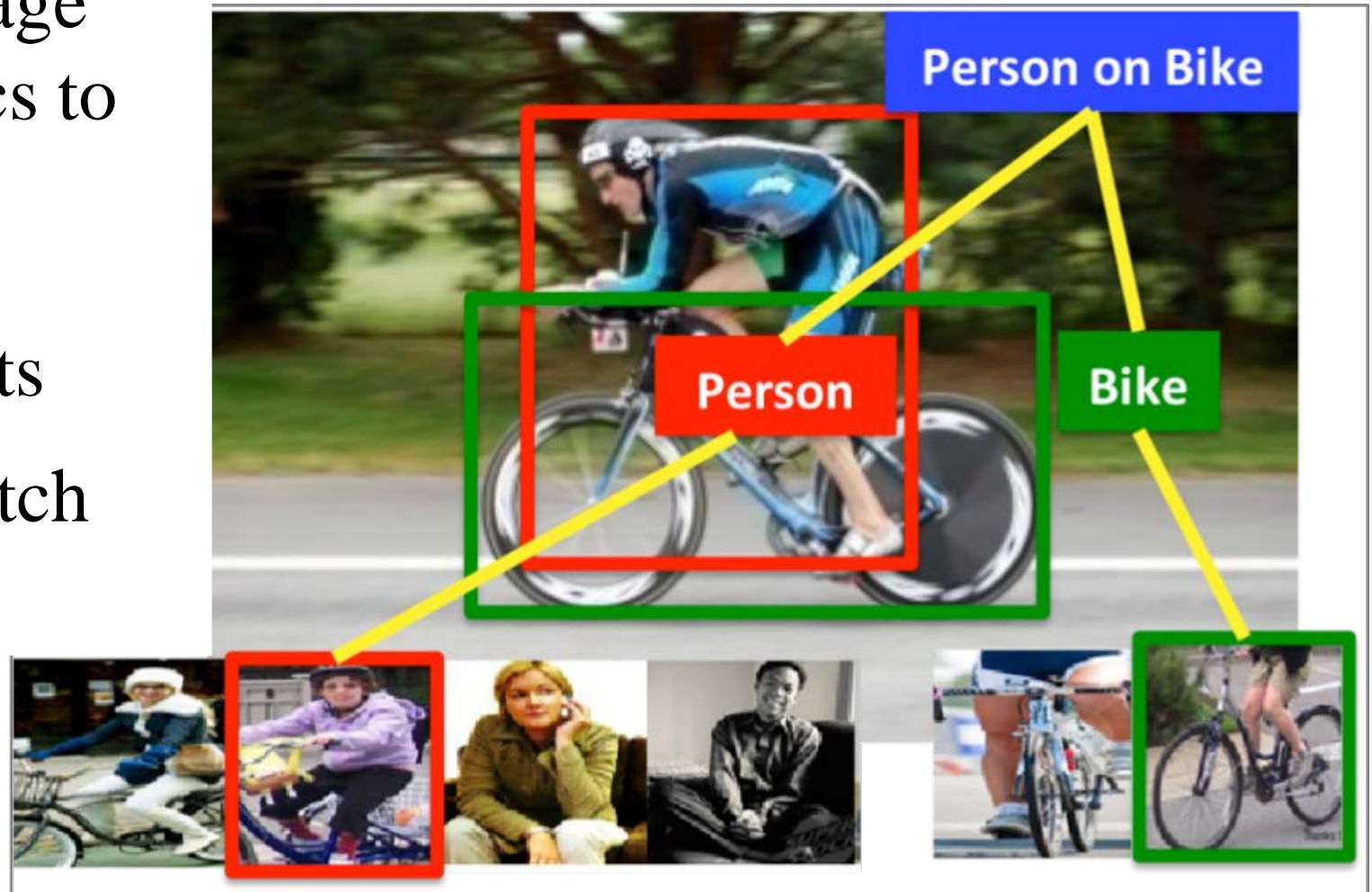
Segmentation

- From edges, identify major regions in image



Matching

- Compare image characteristics to thousands of images with known objects
- Find best match





Movies

<https://www.youtube.com/watch?v=4NU9ikjqjC0>